

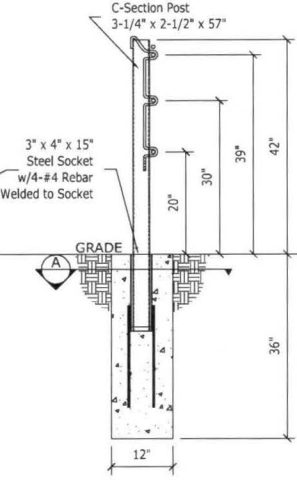
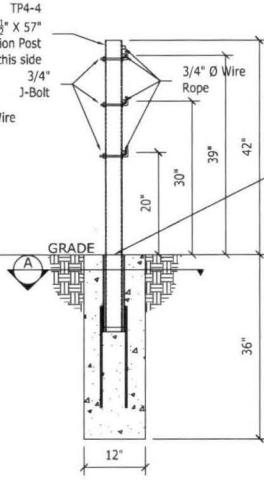
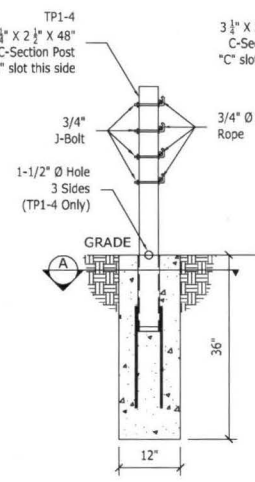
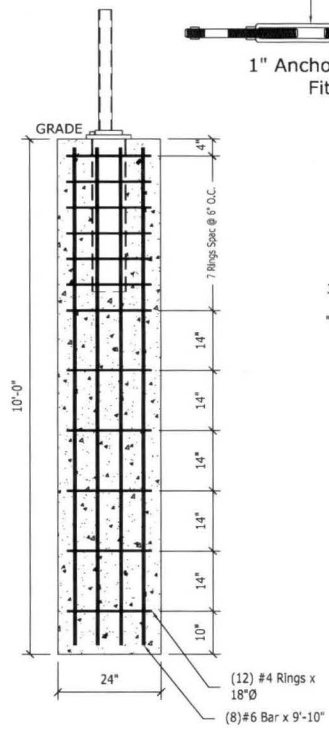
-10 °F	8600
0 °F	8200
10 °F	7800
20 °F	7400
30 °F	7000
40 °F	6600
50 °F	6200
60 °F	5800
70 °F	5400
80 °F	5000
90 °F	4600
100 °F	4200
110 °F	3800

*Allowable Deviation from Chart +/- 10%

TL-4 4 Cable MASH Test and Post Spacing Chart

MASH TEST	Line Post Spacing*
3-10	7'-0"
3-11	7'-0"
3-11	21'-0"
4-12**	21'-0"

*±6" post spacing tolerance
 **All tests are impacted near the midpoint of the installation at a 25° angle, except the 4-12 test, which is impacted at 15°.



Cable Release & Anchor Post

Terminal Post (Welded Rebar Socket)

Terminal Post (Welded Rebar Socket)

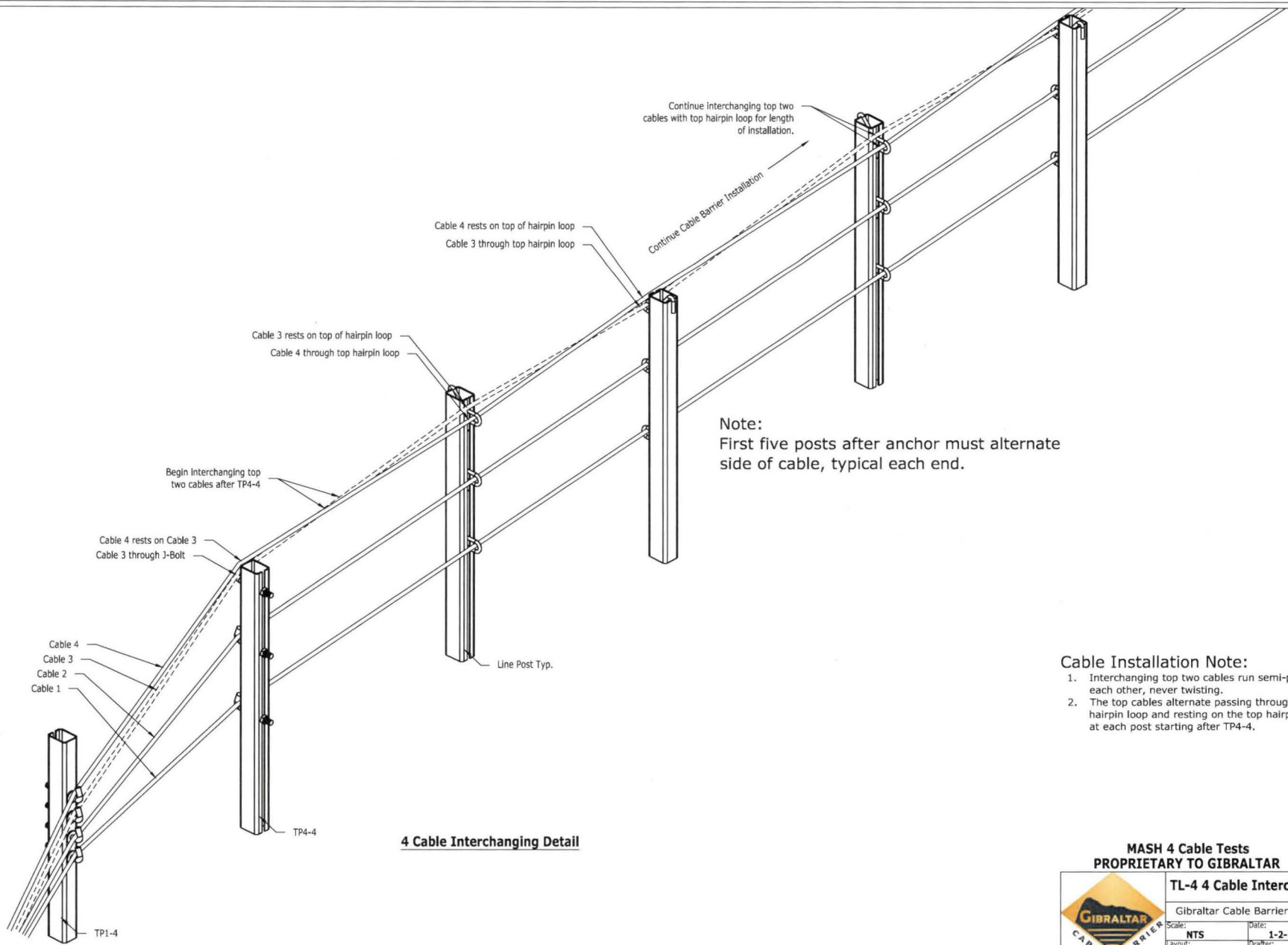
Line Post (Welded Rebar Socket)



MASH 4 Cable Tests PROPRIETARY TO GIBRALTAR

TL-4 4 Cable System Layout

Gibraltar Cable Barrier Systems	
Scale: NTS	Date: 12-19-18
Layout: ANSI B	Drafter: JP



- Cable Installation Note:**
1. Interchanging top two cables run semi-parallel to each other, never twisting.
 2. The top cables alternate passing through the top hairpin loop and resting on the top hairpin loop at each post starting after TP4-4.

**MASH 4 Cable Tests
PROPRIETARY TO GIBRALTAR**

	TL-4 4 Cable Interchanging	
	Gibraltar Cable Barrier Systems	
	Scale: NTS	Date: 1-2-19
	Layout: ANSI B	Drafter: JP