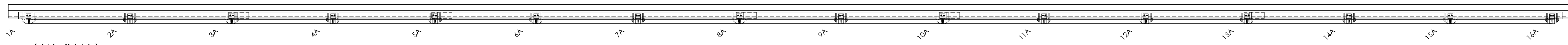


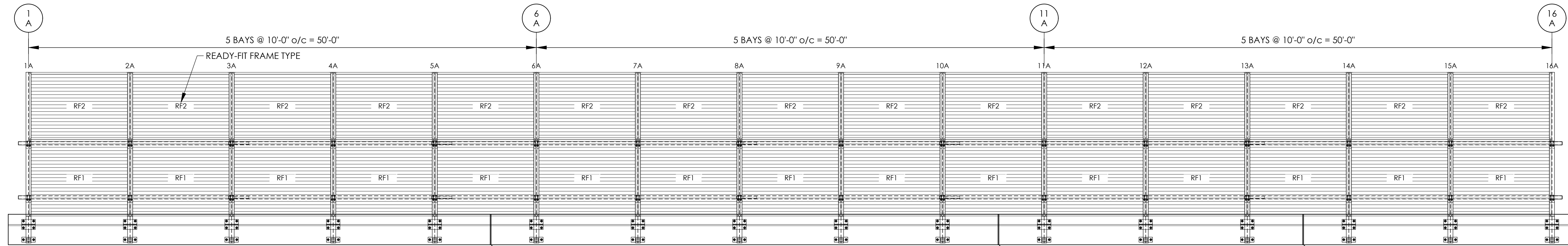
THIS DRAWING IS THE SOLE PROPERTY OF DURISOL LTD AND MAY NOT BE REPRODUCED WITHOUT OUR WRITTEN CONSENT.  
"DURISOL" IS THE REGISTERED TRADEMARK OF DURISOL INTERNATIONAL CORP.  
THE CONTRACTOR SHALL VERIFY ALL DIMENSIONS ON SITE AND CORRELATE WITH CONSTRUCTION DRAWINGS. DURISOL SHALL BE NOTIFIED OF ANY DISCREPANCIES PRIOR TO COMMENCING WITH CONSTRUCTION.

LEGEND:  

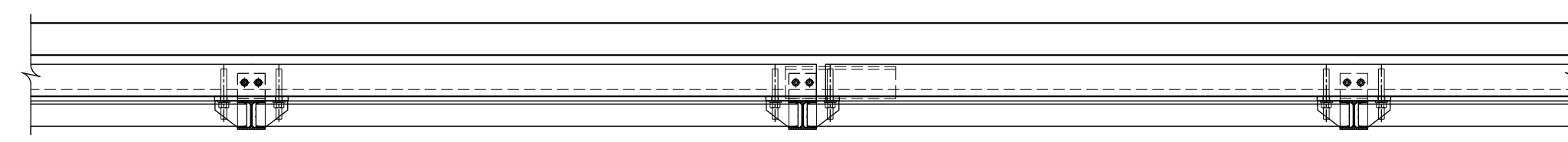
 000.00 PROPOSED TOP OF FOOTING ELEVATION  
 000.00 PROPOSED TOP BASE PLATE ELEVATION  
 00+000 STATION POINT AS PER CONTRACT DWGS



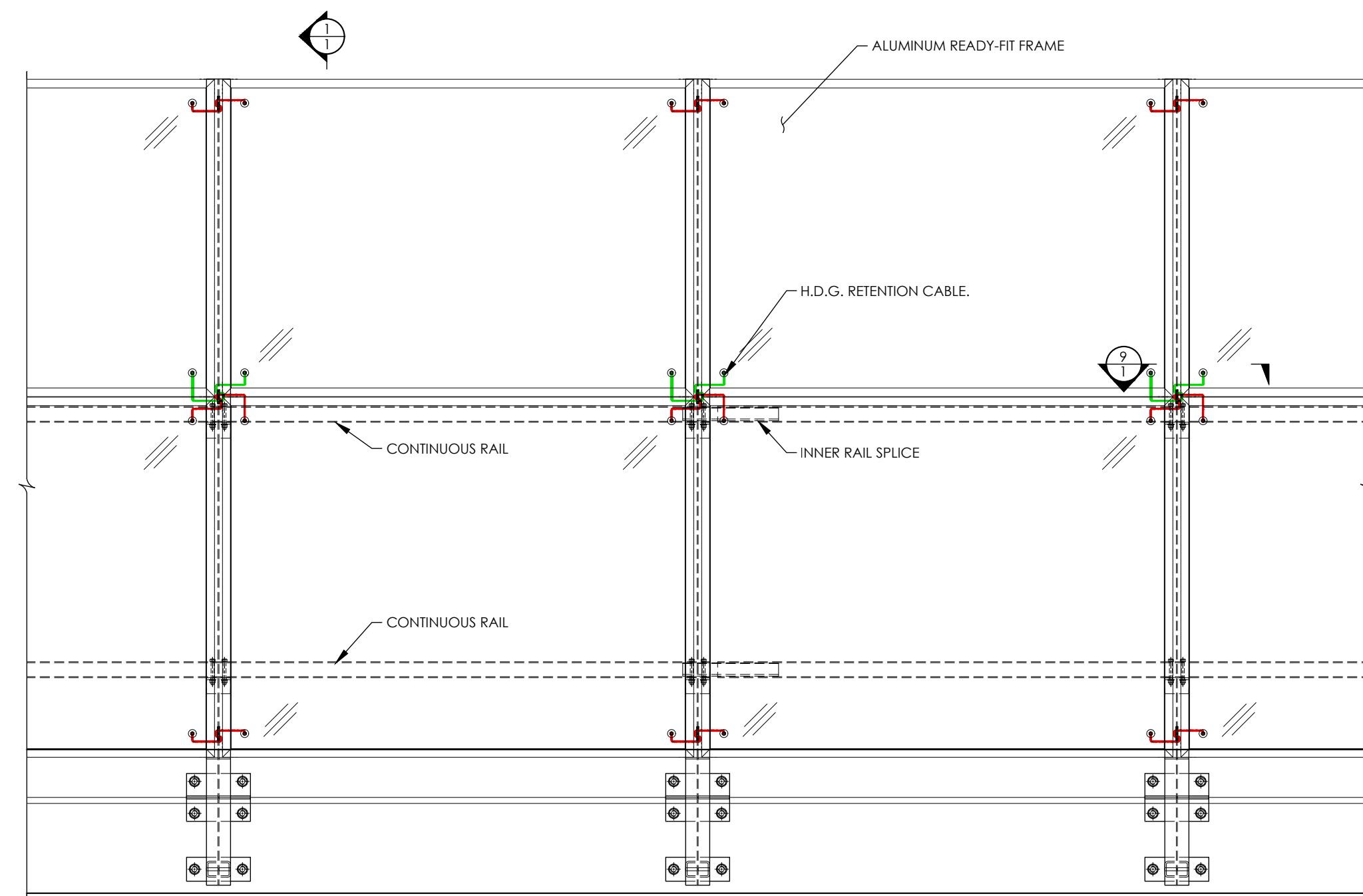
( Wall 'A' )  
PLAN VIEW  
1:96



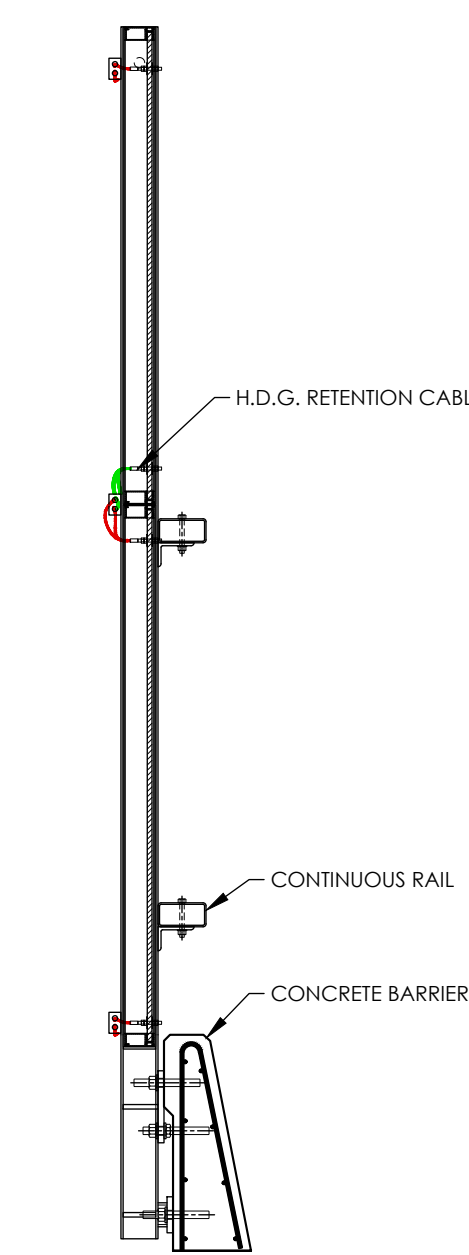
( Wall 'A' )  
ELEVATION  
3/16" : 1'-0" (VIEW FROM OPPOSITE HIGHWAY SIDE)



TYPICAL PLAN  
1/8" : 1'-0"



TYPICAL ELEVATION  
1/8" : 1'-0" (VIEW FROM OPPOSITE HIGHWAY)



SECTION  
3/8" : 1'-0"

No. DATE BY DESCRIPTION

RELEASE No.

PROJECT TITLE:

MASH TL-4  
TYPICAL DETAILS

SGR71a

LOCATION:

DRAWING TITLE:

PLAN, PROFILE  
& TYPICAL DETAILS

FEDERAL PROJECT No:

STATE PROJECT No:

SCALE: NOTED

DRAWN BY: MJR

CHECKED BY:

DATE: JANUARY 5, 2021

DATE OF PRINT: JANUARY 5, 2021

ACAD FILE:

DURISOL PROJECT No:

SHEET No:

1 OF 1